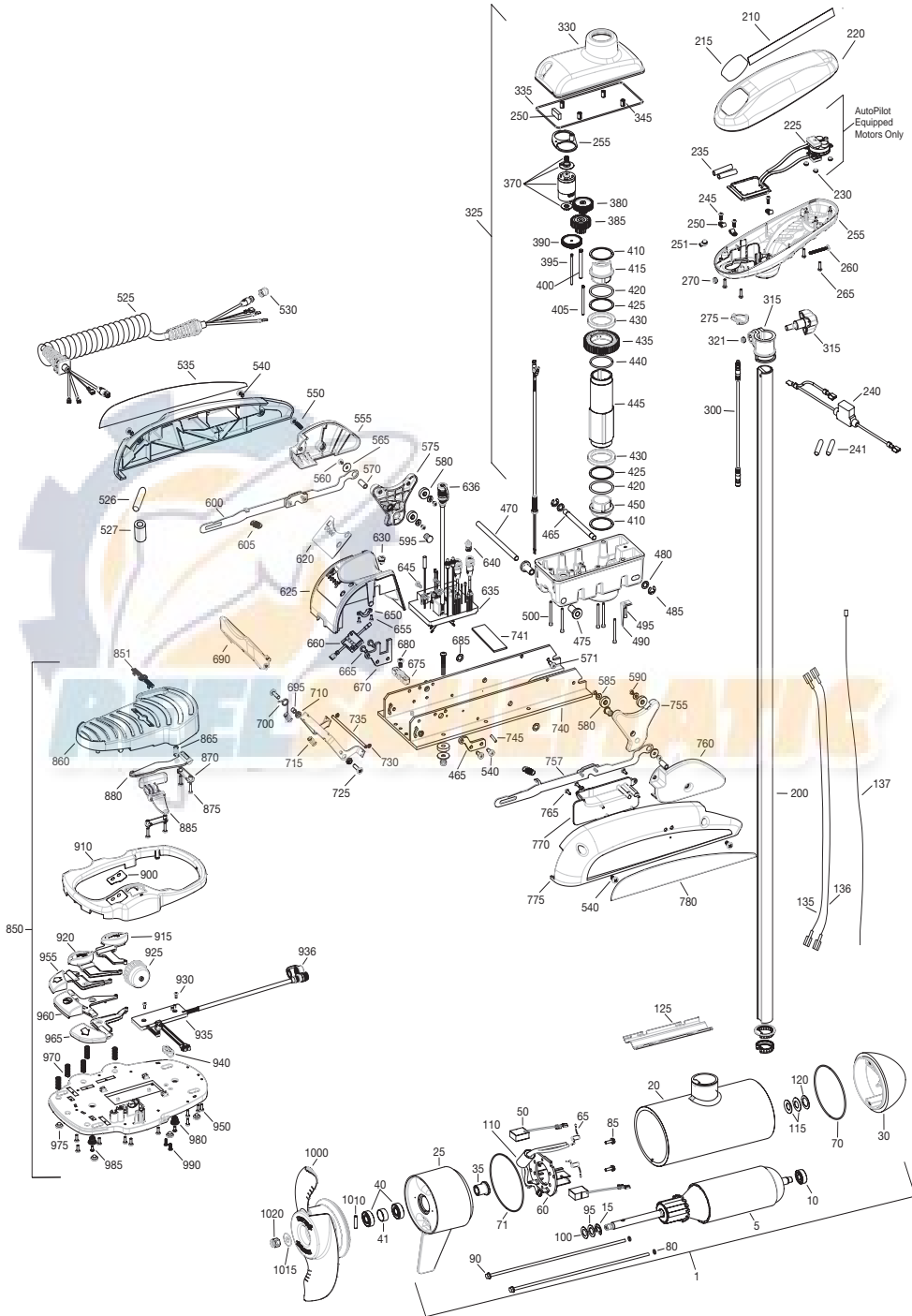


TERROVA 112
112 LBS THRUST
36 VOLT / 52 AMP
54", 60", 72" SHAFT

for use with "P" serial numbers
2-year warranty



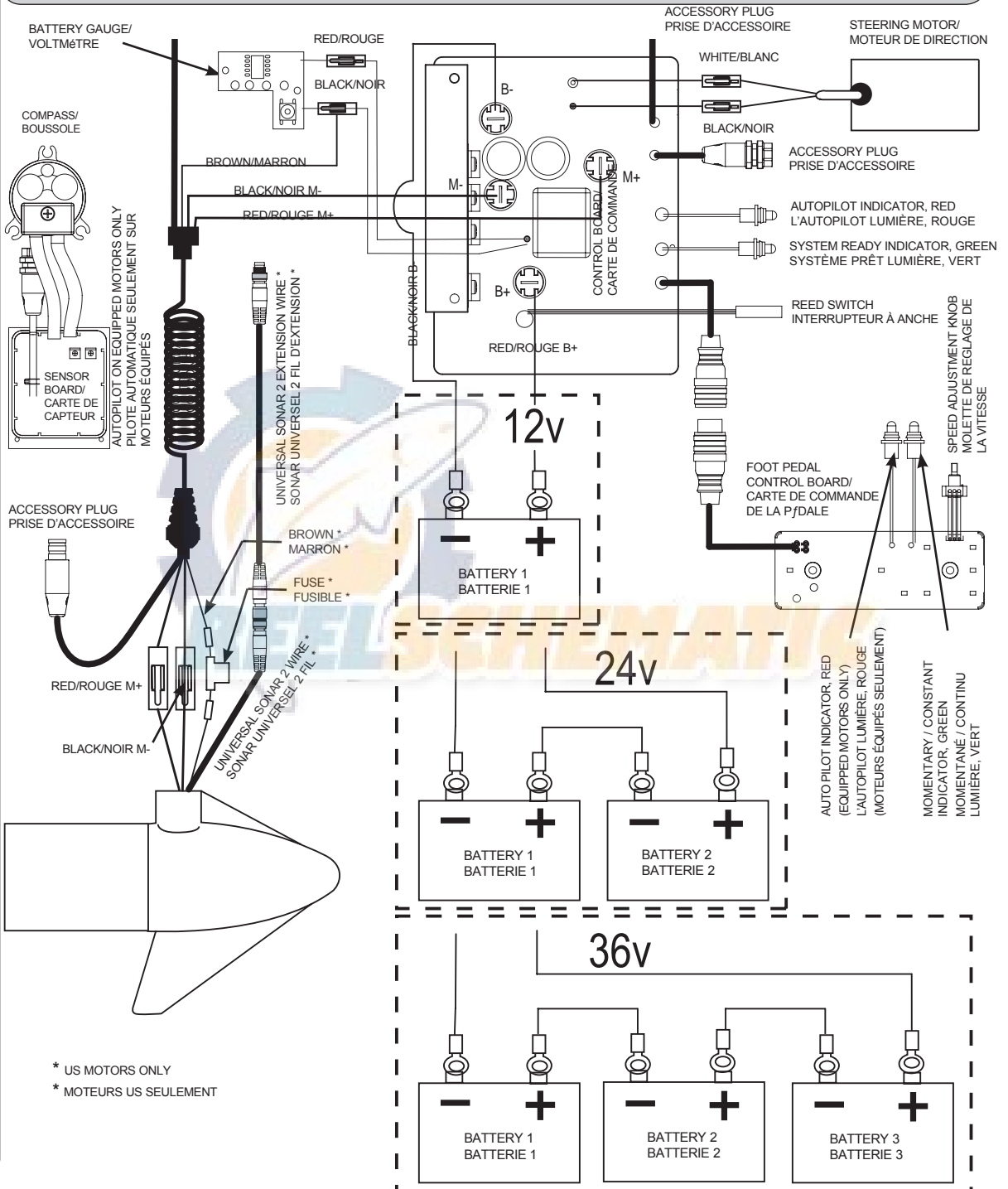
Item	P/N	Description	Qty	Item	P/N	Description	Qty
1	2777082	36V Motor US2 72"/tube assy	1	250	2052510	Cable clamp	3
	2777081	36V Motor US2 60"/tube assy	1	255	2322500	Ctrl box	1
	2777080	36V Motor US2 54"/tube assy.	1	260	2332102	Screw, 10-24	1
5	2-100-245	Armature assembly	1	265	2372100	Screw, 8-18 x .625	4
10	140-014	Bearing	1	270	2333101	Nut, 10-24	1
15	788-040	Retaining ring	1	275	2224700	Plug, ctrl box US2	1
20		Center hsg. w/tube [included in 200]	1	300	2211415	Universal sonar 2 extension cable	1
25	2-300-150	Brush end housing assembly	1	305	2771500	Depth collar assembly [includes 315-321]	1
30	9421-245	Plain end housing US2 54" or 60"	1	315	2260906	Knob [included in 305]	1
	9421-247	Plain end housing US2 72"	1	320	2321706	Washer [included in 305]	1
35	144-017	Flange bearing	1	321	2323102	Nut [included in 305]	1
40	880-025	Seal	2				
41	725-095	Paper tube - seal bore	1	325	2997025	Steering housing [includes 330-500]	1
50	188-095	Brush	2	330	2326501	Steering housing top	1
60	9-738-011	Brush plate assembly	1	335	2324604	O-ring, case seal	1
65	975-045	Brush spring	2	345	2305605	Roll pin 5/16	4
■	2881450	Seal & Oring Kit [includes 40, 70-80]	1	350	2308601	Breather, filter	1
70	701-098	O-ring, motor plain end	1	355	2328610	Cradle, motor	1
71	701-107	O-ring, motor brush end	1	370	2777025	Motor, steering assembly	1
80	701-009	O-ring, thru-bolt	2	380	2302255	Gear, cluster 3rd stage	1
85	2053410	Screw, 10-32 x 1/2	2	385	2302250	Gear, cluster 2nd stage	1
90	830-094	Thru-bolt 12-24	2	390	2302245	Gear, cluster 1st stage	1
95	990-051	Washer, steel	1	395	2302610	Shaft, gear 1st stage	1
100	990-052	Washer, nylontron	2	400	2302620	Shaft, gear 3rd stage	1
110	2307312	Ferrite bead	1	405	2302615	Shaft, gear 2nd stage	1
115	992-011	Washer, belleville	2	410	2321704	Washer, thrust	2
120	990-011	Washer, shim	1	415	2321515	Liner, output tube	1
125	582-016	Clip, retaining, long	1	420	2324608	O-ring, 224	2
135	640-048	Leadwire, black 72"	1	425	2321720	Shim, O-ring	2
	640-044	Leadwire, black 60"	1	430	2327308	Bearing, ball sealed	2
	640-042	Leadwire, black 54"	1	435	2322200	Gear, output	1
136	640-148	Leadwire, red 72"	1	440	2324601	O-ring, output gear	1
	640-144	Leadwire, red 60"	1	445	2322030	Tube, output machined	1
	640-142	Leadwire, red 54"	1	450	2321510	Collar, drive, bottom	1
137	640-317	Groundwire, brown 72"	1	455	2326506	Steering housing, Bottom	1
	640-316	Groundwire, brown 60"	1	465	2322600	Pin, latch, zp	1
	640-315	Groundwire, brown 54"	1	470	2322602	Pin, pivot, zp	1
				475	2327310	Bushing, pivot pin	2
200	2777245	Tube, composite 60" FW [includes 20]	1	480	2321702	Washer, flat .375	2
	2777247	Tube, composite 72" FW [includes 20]	1	485	2263011	E-ring .375	2
				490	2322702	Spring, latch pin	2
210	2325665	Decal, cover	2	495	2323410	Screw, 8-32 x .75	1
215	2325691	Decal, ctrl box 112US2	1	500	2323408	Screw, 8-32 x 2	7
	2325689	Decal, ctrl box 112 Autopilot & US2	1				
220	2320200	Cover, ctrl box	1	510	2090651	Leawire, 10 ga	1
225	2324032	Ctrl board, compass, Autopilot only	1	525	2991271	Coil cord, 54" / 60" / 72"	1
230	2302960	Grommet, compass, Autopilot only	3		2991272	Coil cord, US2, 54" / 60" / 72"	1
235	2065400	Wire insulator	2	526	2325401	Shrink Tube 3/4" ID x 2" w/adhs	1
240	2218200	Fuse holder	1	527	2307313	Bead-Ferrite	1
241	2375400	Shrink Tube 1/4" OD x 1 3/4"	2	528	2320710	Terminal-Amp (T-Tab)	1
				530	2320202	Cap, dust, coil cord, non-AP only	1
245	2372100	Screw, 8-18 x .625	3	535	2325641	Decal, sideplate, left	1

* This item is part of an assembly. This item cannot be sold separately due to machining and /or assembly that is required.

Item	P/N	Description	Qty	Item	P/N	Description	Qty
540	2323404	Screw, 1/4-20	4	850	2994720	Foot pedal [includes 815-990]	1
545	2321915	Sideplate, left	1	851	2326710	Plug, foot pedal	1
550	2323403	Screw, 1/4-20 x .375	2	860	2324400	Pedal, heel-toe	1
555	2321927	Skid, left	1	865	2322714	Spring, momentary	1
560	2323422	Screw, 10-24 x .375	2	870	2321300	Clamp	2
565	2321700	Washer, #10 SS	2	875	2223430	Screw, 8 x .75	4
570	2322920	Stand-off, aluminum plain	2	880	2328600	Flex finger	1
571	2323405	Screw, 1/4-20 x 1/2" MCH SS	2	885	2323710	Button, momentary, left	1
575	2323907	Ramp, 4-1/2" left	1	900	2325660	Decal, foot pedal	1
580	2325115	Pad, rubber rest	4	910	2320205	Cover, heel-toe	1
585	2321706	Washer, #8	4	915	2323725	Button, AP	1
590	2323412	Screw, 8-18 x .25	4	920	2323715	Button, Mom/Con	1
595	2324705	Insert, ramp	2	925	2320100	Knob, speed, foot pedal	1
600	2994202	Arm, release, left	1	930	2332103	Screw, 6-20 x .375	2
605	2322710	Spring, extension	2	935	2324021	Control board, foot pedal	1
■	2770250	Cover, speed control with decal	1	936	2320207	Dust cap	1
620	2325650	Decal, speed control	1	940	2322900	Strain relief, foot pedal	1
625	2320210	Cover, speed control	1	945	2324500	Base plate, foot pedal	1
630	2322901	Strain relief	1	950	2301310	Screw, #8 x .5	10
635	2324017	Control board, 24-36v	1	955	2323730	Button, steer, left	1
■	2884050	Switch-reed repair kit		960	2323735	Button, momentary	1
636	2320208	Dust plug	1	965	2323731	Button, steer, right	1
640	2320203	Cap, dust, control board	1	970	2322704	Spring, foot pedal	5
645	2323406	Screw, 10-24 x .50	2	975	2994859	Bumper, bag assy	1
650	2321315	Holder, connector	1	980	2322706	Spring, barrel	2
655	2332103	Screw, 6-20 x .375	2	985	2323420	Screw, 8-18 x .375	2
660	2074072	Battery meter, 36v	1	990	2372100	Screw, 8-18 x .625	2
665	2323402	Screw, 1/4-20 x .375	4				
670	2321940	Bracket, strain relief	1	■	1378160	Propeller kit WW2 [1000-1020]	
675	2321310	Strain relief, wire	1	■	2994876	Propeller bag assy [1010-1020]	
680	2323405	Screw, 1/4-20 x .5	1	1000	2341160	Propeller WW2	1
685	2013100	Speed nut, .375	2	1010	2262658	Drive pin, large	1
690	2320215	Handle, release cover	1	1015	2091701	Washer, prop, large	1
695	2301700	Bushing,	1	1020	2093101	Nut, nylock, prop, large	1
700	2322701	Spring, release handle	1				
710	2320400	Handle, release FW	1	■	2994864	Mounting hardware bag assy	
715	2322712	Spring, release handle	2				
720	2322604	Bushing, handle	2				
725	2332104	Screw, 1/4-20 x .625	2				
730	2323000	E-clip, 3/16, SS	2				
735	2322606	Pin, follower, handle	1				
740	2321905	Base extrusion, machined	1				
741	2321721	Shim, 2 x 4 x .025"	1				
745	2322912	Spring pin,	2				
750	2321950	Bracket, sideplate	1				
755	2323902	Ramp, 4-1/2" right	1				
757	2994204	Arm, release, Right	1				
760	2321922	Skid, right	1				
765	2301310	Screw, 8-18 x .5	3				
770	2320220	Cover, access, FW	1				
775	2321910	Sideplate, right	1				
780	2325640	Decal, sideplate, right	1				

Terrova 112 is 36-volt only!

THIS IS A UNIVERSAL MULTI-VOLTAGE DIAGRAM. DOUBLE CHECK YOUR MOTORS VOLTAGE FOR PROPER CONNECTIONS



* US MOTORS ONLY
* MOTEURS US SEULEMENT